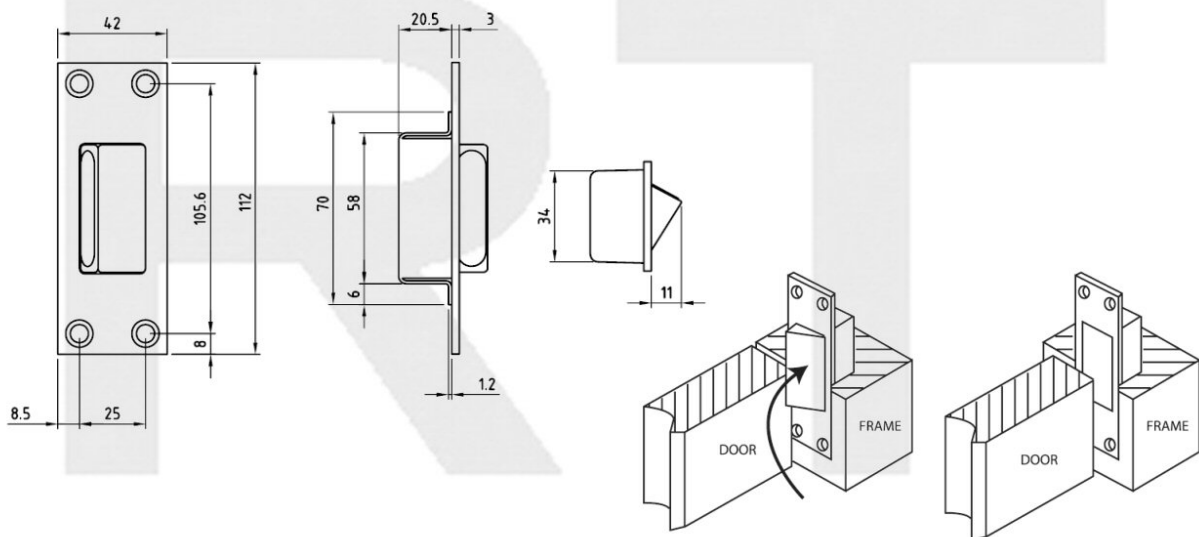
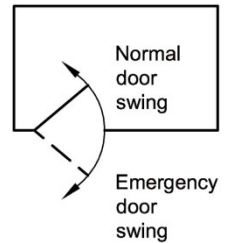
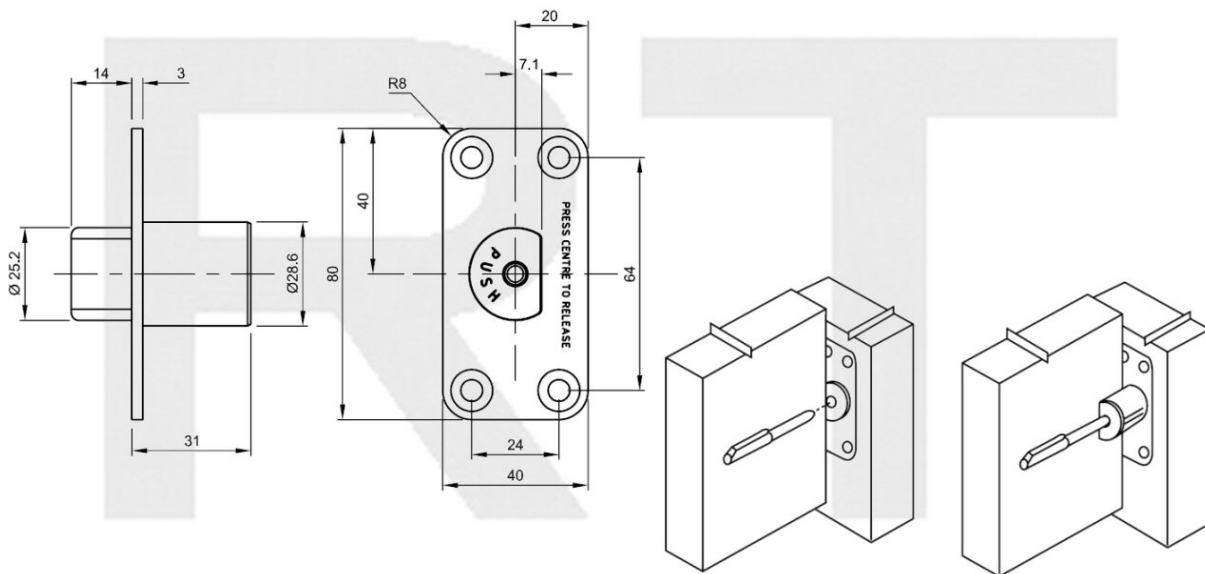
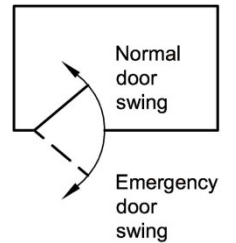


Royde & Tucker H131-105 emergency release door stop



- Grade 304 stainless steel
- Allows Double Action doors to operate as single swing when hung on pivots
- Emergency access is gained by depressing the stop and pulling the door outwards
- Stop release resets automatically
- Rubber insert for quieter action
- Suitable for use on 30 and 60 fire doors
- To be fitted with HP131-105 2mm thick intumescent pad pack for fire doors

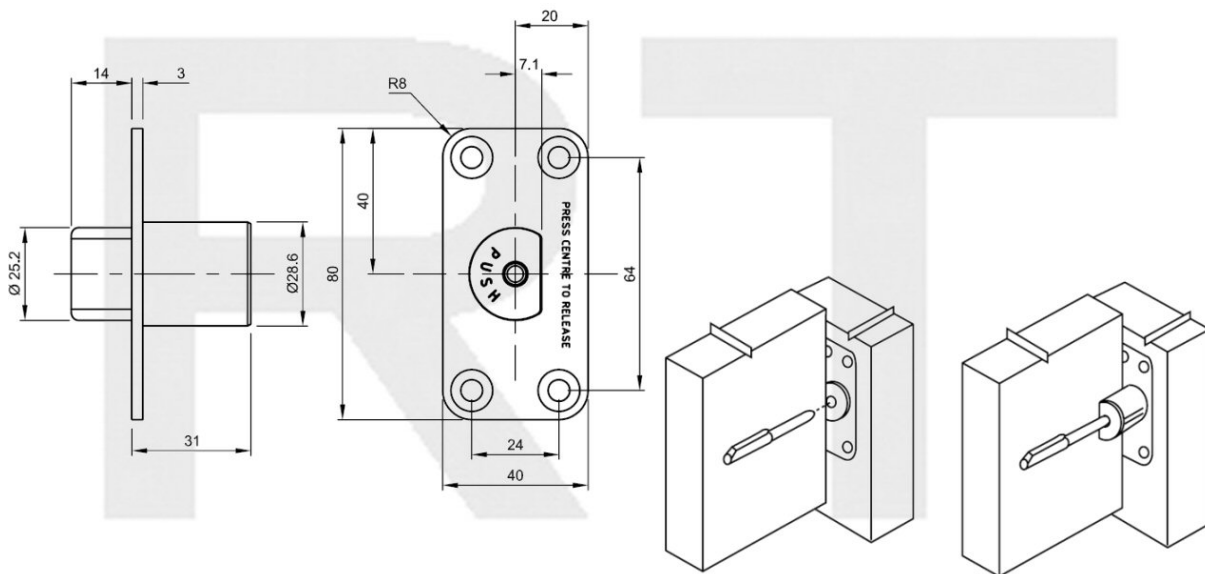
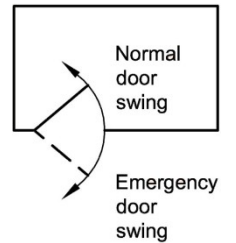
Royde & Tucker H131-106 emergency release door stop



- Grade 304 stainless steel
- Allows Double Action doors to operate as single swing when hung on pivots
- Emergency access is gained by depressing the stop and pulling the door outwards
- Stop release resets automatically
- Includes holdback facility
- Suitable for use on 30 and 60 fire doors
- To be fitted with HP131-106 2mm thick intumescent pad pack for fire doors
- Complete with M5 x 30mm screws

Note: The unit has an R8 radius for easier installation.

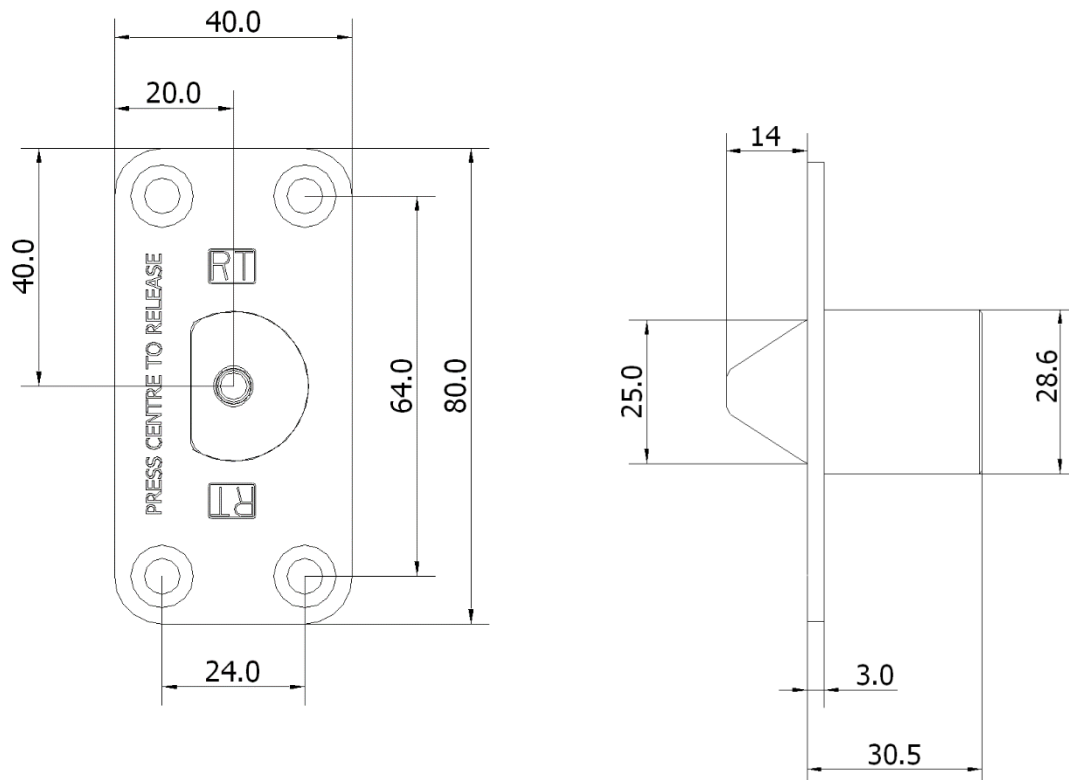
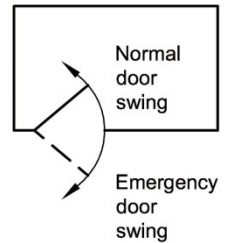
Royde & Tucker H131-107 emergency release door stop



- Grade 304 stainless steel
- Allows Double Action doors to operate as single swing when hung on pivots
- Emergency access is gained by depressing the stop and pulling the door outwards
- Stop release resets automatically
- Includes holdback facility
- Complete with M5 x 30mm screws
- Stop can be locked in or out to e.g. prevent tampering
- Suitable for use on 30 and 60 fire doors
- To be fitted with HP131-106 2mm thick intumescent pad pack for fire doors

Note: The unit has an R8 radius for easier installation.

Royde & Tucker H131-300 emergency release door stop



- Grade 304 stainless steel
- Approved to TS001 Grade 4 (0.5mm) .
- Allows Double Action doors to operate as single swing when hung on pivots
- Emergency access is gained by depressing the stop and pulling the door outwards
- Stop release resets automatically
- Includes holdback facility
- Complete with M5 x 30mm screws
- Stop can be locked in or out to e.g. prevent tampering
- Suitable for use on 30 and 60 fire doors
- To be fitted with HP131-106 2mm thick intumescent pad pack for fire doors

Note: The unit has an R8 radius for easier installation.

Web technical product download sheet

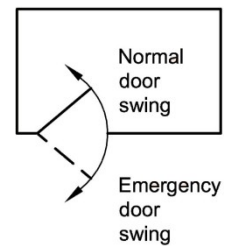
Royde & Tucker



Parts as follows:

1-off: DOUBLE ACTION EMERGENCY RELEASE

4-off: 1-1/4" x No 10 WOODSCREWS.



FITTING INSTRUCTIONS.

1. DECIDE ON A POSITION FOR THE EMERGENCY STOP ON THE DOOR FRAME. SEE DIAGRAM POSITIONS D & E FOR TYPICAL INSTALLATION POSITIONS
2. FIT EMERGENCY STOP SO THAT THE FLAT EDGE IS FLUSH AGAINST THE DOOR WHEN THE DOOR IS FULLY CLOSED AND ALLOWS THE LOCK/LATCHBOLTS TO DEPLOY WITHIN THE STRIKEPLATE.

CHECK AND ENSURE SCREW IS FULLY TIGHTENED

