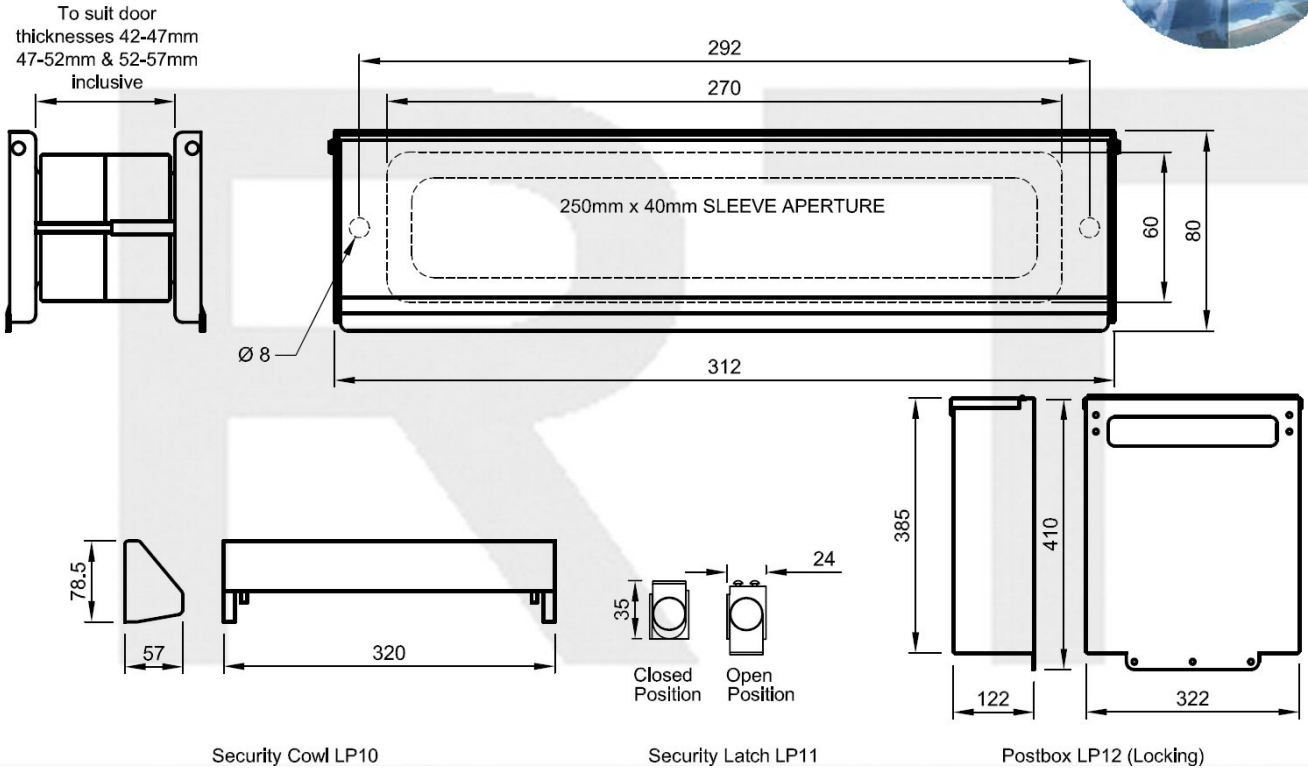
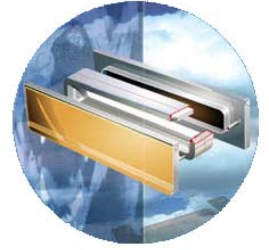


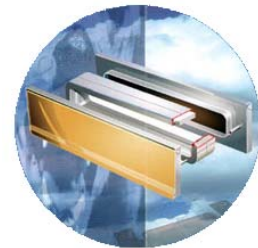
# Royde & Tucker Letterplate security cowl system



- Fire resistant models for 30 and 60 minutes
- Certifire Approved – CF255
- Attractive high performance design in various finishes
- To suit door thicknesses 42-47mm, 47-52mm and 52-57mm
- All Letterplates supplied complete with internal flap and aperture liner.
- Easily and quickly installed in the factory or on site.
- Optional security features include internal security cowl and internal security latch
- Optional internal Post Box available in locking version, non-standard dimensions manufactured to order

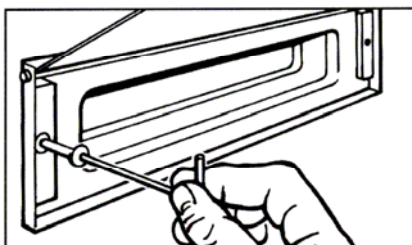
LETTERPLATE			
STOCK CODE	DOOR SIZE	FIRE RATING	FINISHES AVAILABLE
LP01-44	42-47mm	-	Brushed Stainless Steel
LP01-49	47-52mm	-	
LP01-54	52-57mm	-	
LP02-44	42-47mm	60 minutes	Polished Brass
LP02-49	47-52mm	60 minutes	
LP02-54	52-57mm	60 minutes	
LP03-44	42-47mm	60 minutes with smoke seals	Colours
LP03-49	47-52mm	60 minutes with smoke seals	
LP03-54	52-57mm	60 minutes with smoke seals	
LP05-44		30 minutes	Polished silver & gold
LP06-44		30 minutes	Polished silver & gold

**Royde & Tucker Ltd**  
Bilton Road  
Cadwell lane  
Hitchin  
SG4 0SB  
Tel: 01462 444444  
Fax: 01462 444433  
www.ratman.co.uk  
e-mail: sales@ratman.co.uk

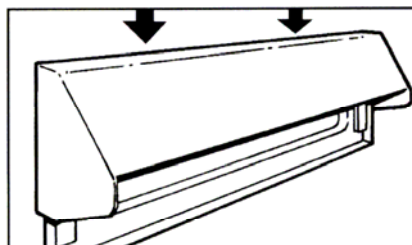


## Royde & Tucker Letterplate security cowl, fixing instructions

### SECURITY COWL FIXING INSTRUCTIONS



1. Loosen hexagonal fixing screws on the inside of your Letterplate.



2. Slide Security Cowl down over fixing screws until cowl studs are engaged.

